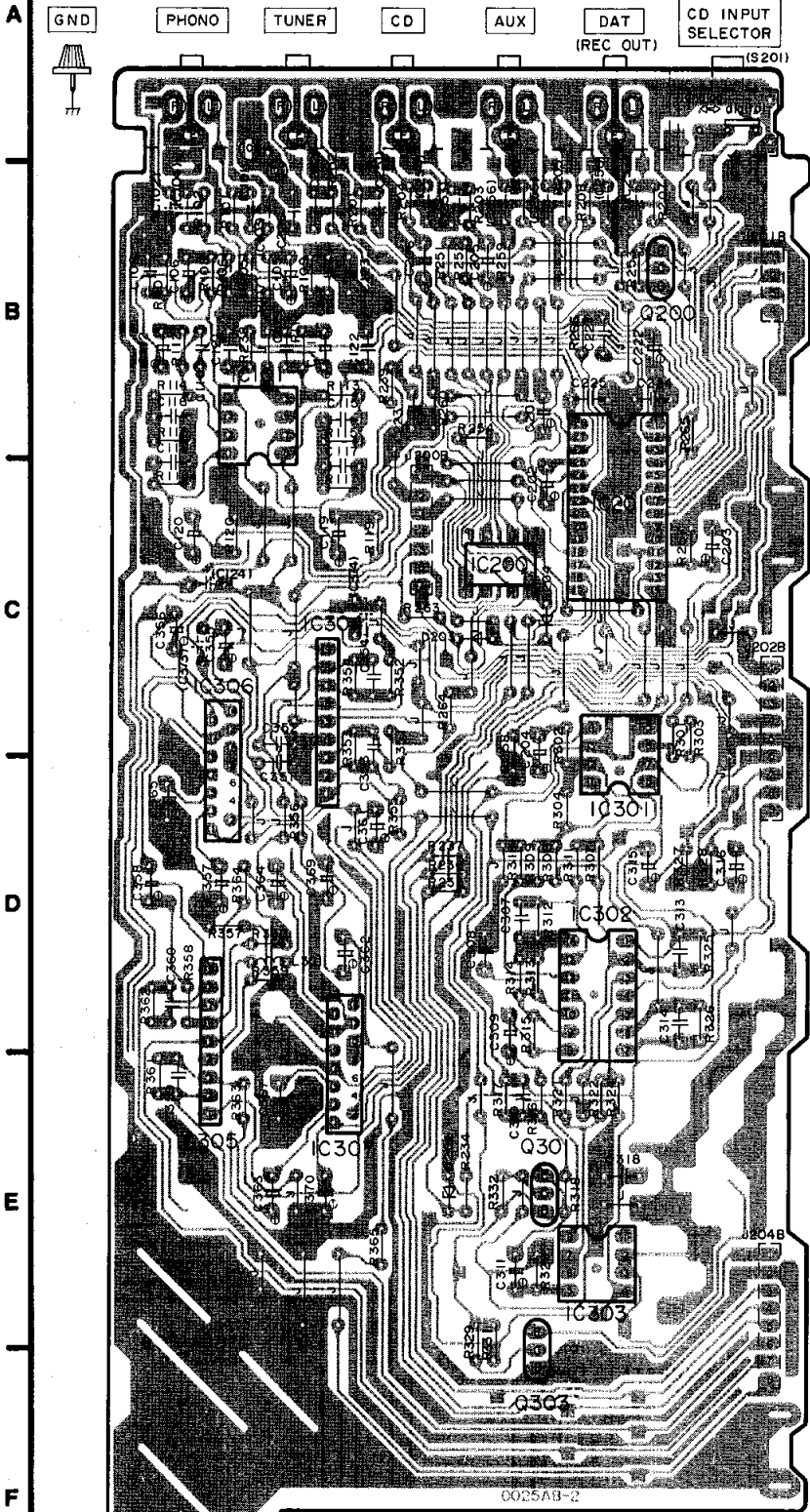
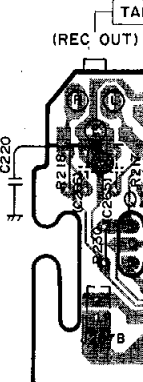


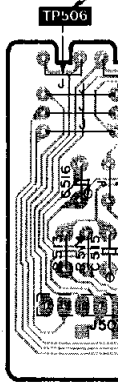
B PHONO EQ. AMP/ATTENUATOR /SRROUND AMP/ INPUT SELECTOR P.C.B.



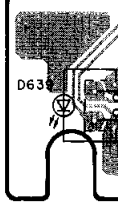
C INP



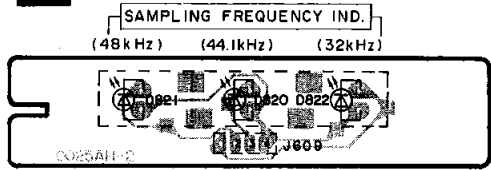
J VOL. Idling (IC)



I SURR BASS

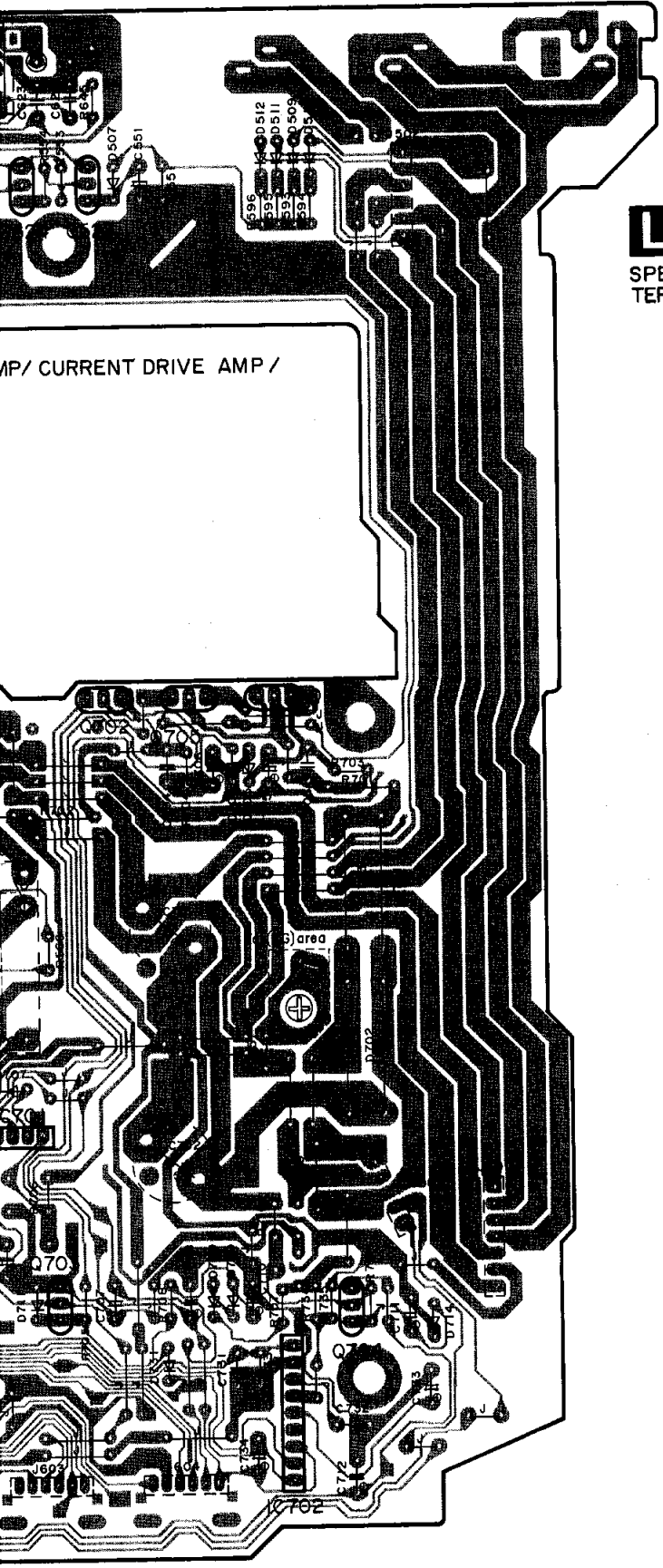


G LED P.C.B.



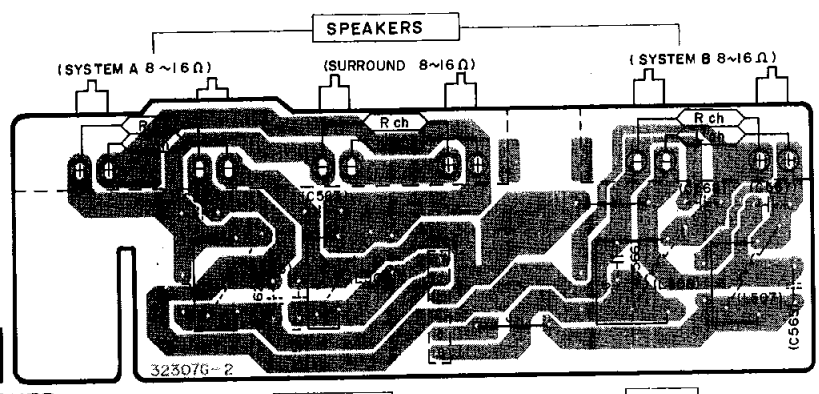
F v





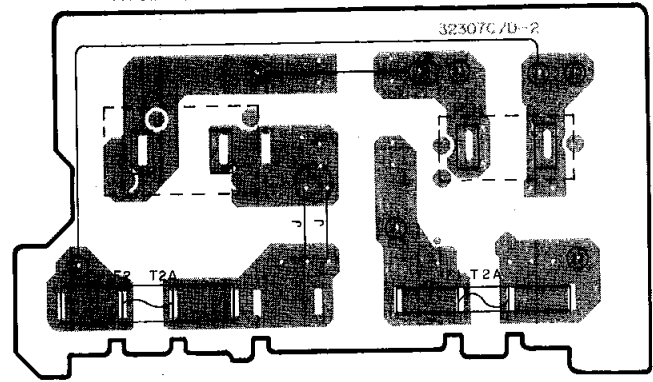
L

SPEAKER TERMINAL P.C.B.



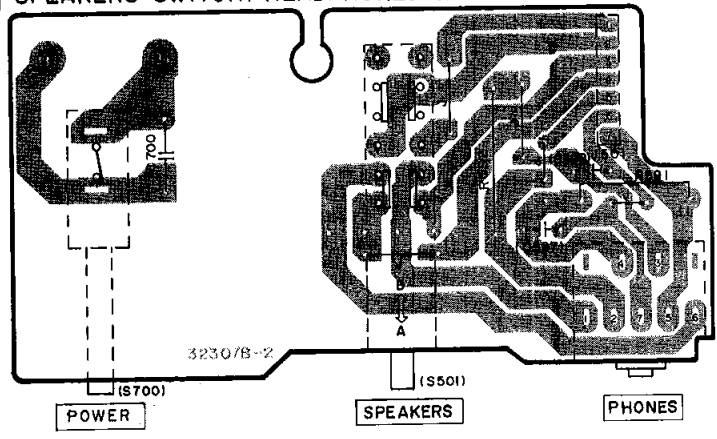
M

AC IN/AC OUTLET TERMINAL P.C.B.

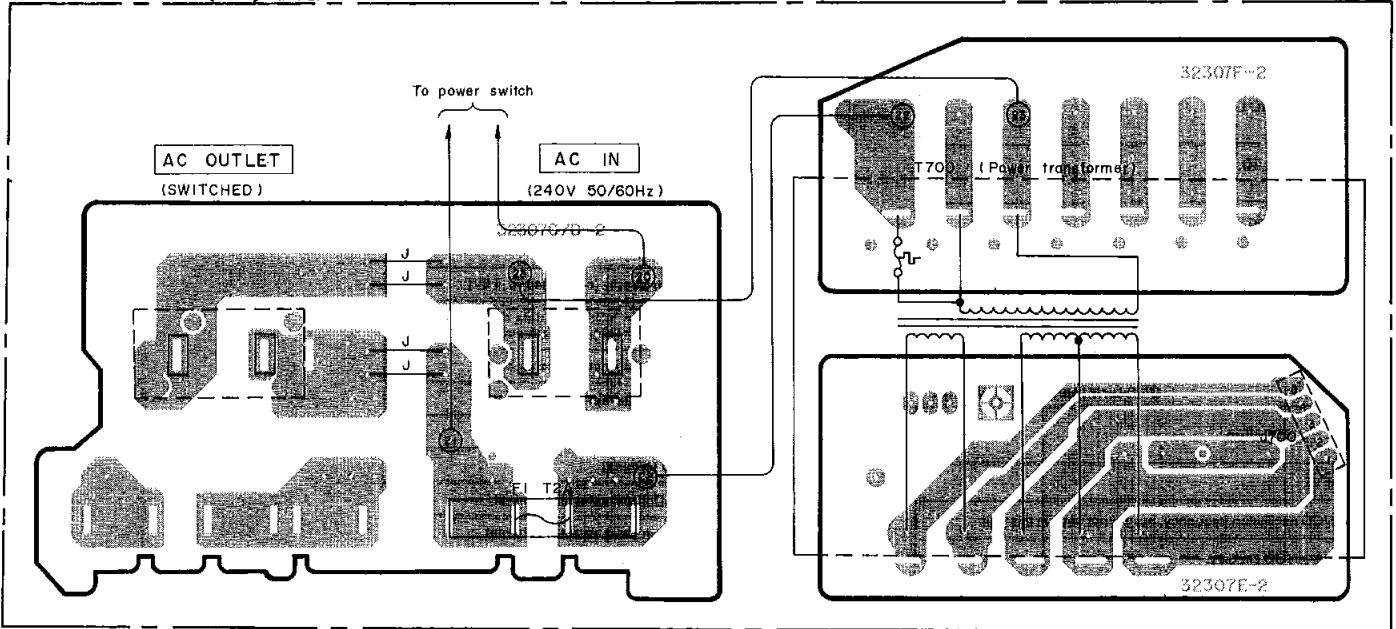


K

POWER SWITCH / SPEAKERS SWITCH / HEADPHONES JACK P.C.B.



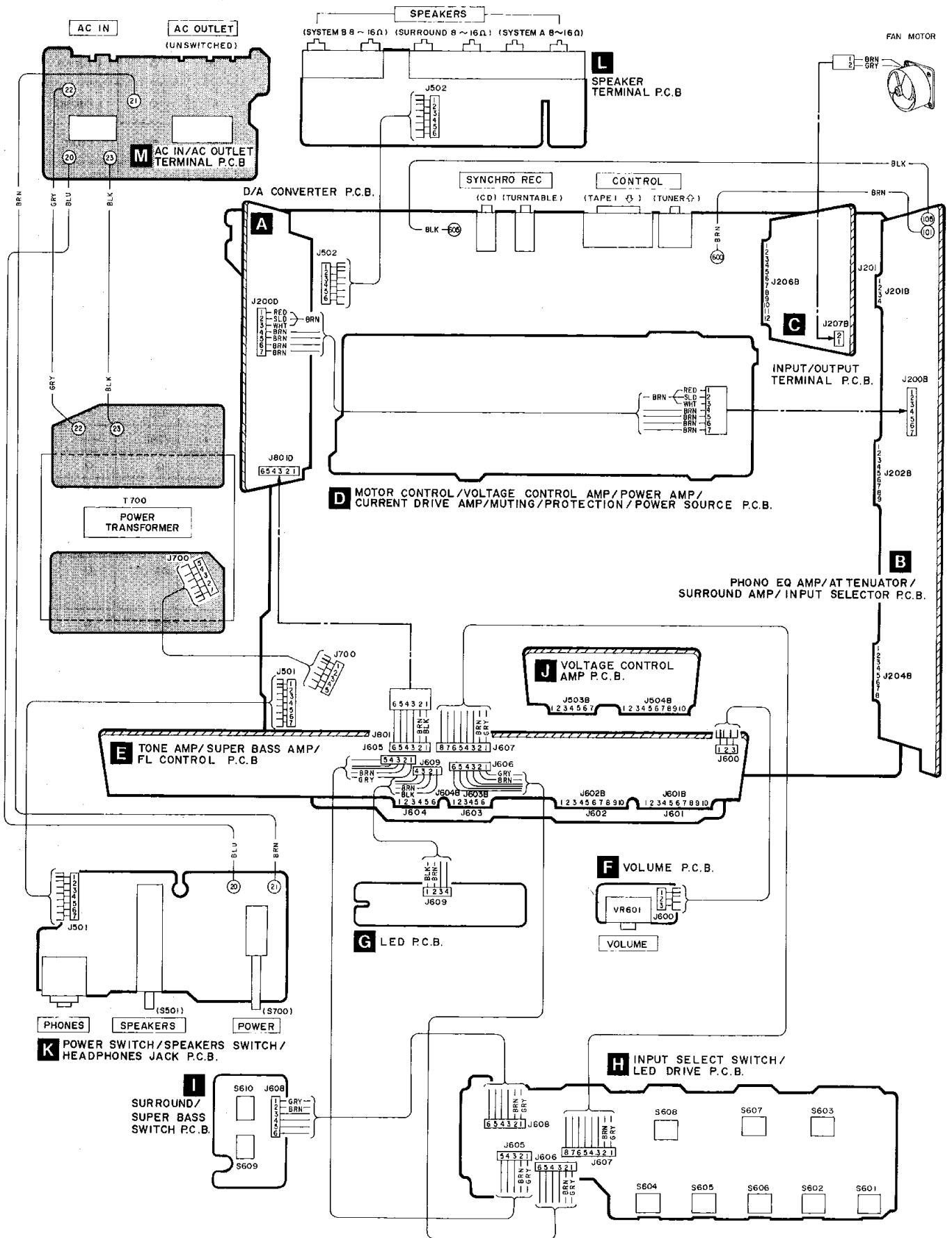
Power source for (EB) area



■ TERMINAL GUIDE OF IC'S, TRANSISTORS AND DIODES

AN6552F AN6558F M5238P LM833M63 SVIBA4560F MN6636S AN6554F MN4030B MN4013B TC74HCU04AF TC4066BF	8 pin 10 pin 14 pin	TC74HC164AF TC74HC00AF TC74HC4053AF TC74HC123AF DN74LS145S YM3404B PCM56P-L AN7062N TC9164N YM3623B M50754-411SP	14 pin 16 pin 18 pin 28 pin 64 pin	No.1	SVIH8DN2041B 1 2 3 4 5	AN7073 AN6557F 1 2 3 4 5 6 7 8
SVI4004 24PIN No.1	AN78M05R 4 pin No. 1	M51131L-702 No.	2SC32980Y 2SA13060Y 2SD1265-P 2SB941PQR B C E	2SC3311A-Q, UN4111 2SA1309AGS, UN4211 2SD1450R DTA114ESTP 2SB1030Q E C B		
2SA992E, 2SC2631-Q 2SB621A-R 2SA1123R 2SC1685NCQRS E C B	MA167 MA29WA MA165 MA700A Anode Cathode Ca → A	SVDS3V40 K → A	LN846RP-C LN873RP-LS LN038417P1 Anode Cathode Ca → A	LN0202RP2 4 3 2 1		
MA4051, MA4120 MA4082M, MA4062-M MA4140M, MA4300M Anode Cathode Ca → A						

WIRING CONNECTION DIAGRAM



FUNCTIONS OF IC TERMINALS

•IC601 (M50754-411SP)

Pin No.	I/O	Terminal Name	Function	
1	I	V _{DD}	To be connected to a power supply.	
2	O	LCD	This is the output terminal for the LED selector indicator of the CD player. At a "HI" level the LED lights up.	
3	—	CS2	For ground connection.	
4	I	VR1	These are the terminals for the rotary encoder of the volume of VR601.	
5		VR0		
6	O	PWM	This terminal outputs the signal for the control of the volume and balance	
7	I	REC	This is the terminal for the detection of recording on the deck.	
8	O	SY OUT	This is the terminal for synchro recording on the deck.	
9	I	DECK	This is the terminal for direct operations on the deck.	
10	I	CDE	Outputs the signal for the control of CD editing.	
11	I	CD	These are the terminals for the start of synchronization on the CD unit.	
12		CD. SY.		
13	I	PL. SY.	These are the terminals for sync recording on the player.	
14	O	PL. START		
15	O	PL. STOP		
16	O	DATA	CLK: This terminal outputs the clock signal for reading serial data. DATA: This terminal outputs the serial data. STB: This terminal outputs the pulse for the control of the setting of the analog switch.	
17		CLK		
18		STB	The serial data inputted into IC201 is latched by the STB pulse and the switch is set to ON according to data.	
19	O	SURR	Outputs the signal for the control of SURROUND. At a "LOW" level SURROUND is ON.	
20	O	S. LOUD	Outputs the signal for the control of SUPER DYNAMIC SOUND. At a "LOW" level SUPER DYNAMIC SOUND is ON.	
21	O	MUT 1	Outputs the signal for the control of muting.	
22	—	SYN OUT 2	Unused.	
23	O	MUTE	Outputs the -6 dB signal for the control of attenuated muting.	
24	I	HALT	This is the terminal for the detection of power supply.	
25	I	REMOTE	Inputs data from the remote controller.	
26	—	CN VSS	For ground connection.	
27	I	RESET	This terminal inputs the reset signal.	
28	I	X IN	These are the I/O terminals for the oscillating clock signal.	
29	O	X OUT		
30	—	Xc IN	Unused.	
31		Xc OUT		
32	—	V _{SS}	For ground connection.	
33	—	NC	Unused.	
35 37	O	S0 S2	These are the key matrix terminals for input selection.	
61	I	K0		61 SUPER DYNAMIC SOUND
64		K3		62 SURROUND DAT
				63 MUTING VD TUNER
			64 VTR PHONO	
38	I	V _P	The signal which pulls down the voltage is inputted into this terminal.	
39 46	O	S3	These terminals output the signals for the control of the multi-digital display.	
49		S10		
52		G0 G3		
53	O	L TAPE	Outputs the signal for the control of the TAPE LED. At a "HI" level the LED lights up.	
54	O	L VTR	Outputs the signal for the control of the VTR LED. At a "HI" level the LED lights up.	
55	O	L VD	Outputs the signal for the control of the VD LED. At a "HI" level the LED lights up.	

Pin No.	I/O	Terminal Name	Function
56	O	L TUNER	Outputs the sig At a "HI" level
57	O	L PHONO	Outputs the sig At a "HI" level
58	O	L DAT	Outputs the sig At a "HI" level
59	O	VTR REC MUTE	Outputs the sig
60	O	L MUTE	Outputs the sig At a "HI" level

•IC805 (YM3623B) DIGITAL INTERFA

Pin No.	Terminal Name	I/O	Function
1	VDD1	—	This is the power cor
2	ADJ	I	This terminal is for th
3	VCO	I/O	This is the external c
4	VSS2	—	This is the ground cc
5	XO	O	This is the output ter
6	XI	I	This is the input terr
7	KMODE	I (PU)	At a high level... the I Oth At a low level... the c
8	ØA	O	This terminal output circuitry is activated, (fs=about 16.9344 f
9	ØB	O	The frequency of the functions. When the of the DIN terminal (
10	T1	I (PU)	This is the input tern
11	T2	I (PU)	This is the input tern
12	BCO	O	Used to output the ti
13	SYNC	O	Used to output the s
14	VSS1	O	This is the ground c
15	L/R	O	At a high level... dat At a low level... data
16	DEF	O	At a high level... inp At a low level... inpu
17	DO	O	Outputs 16-bit data.
18	WC	O	This is the terminal
19	DIGR	O	This terminal output
20	DIGL	O	This terminal output
21	ERR	O	Error detection term
22	SEL	I (PU)	Input SEL S1 Output L R Control L R
23	S1	O	H L R
24	S2	O	H L R
25	SCK	O	Terminal for the clo
26	SSYNC	O	For the signal of the
27	SDO	O	For the output of su
28	DIN	I (PU)	For the input of dat

Function
nal for the control of the TUNER LED. the LED lights up.
nal for the control of the PHONO LED. the LED lights up.
nal for the control of the DAT LED. the LED lights up.
nal for muting the VTR recording.
nal for the control of the MUTING LED. the LED lights up.

CE RECEPTION

(PU) terminals are "pulled up".

Function																
nection terminal (+5 V).																
ie adjustment of the VCO oscillation frequency, but it is not used in this unit.																
ondenser terminal for the VCO circuitry.																
nection terminal of the system.																
terminal for the crystal vibrator (16.9344 MHz).																
terminal for the crystal vibrator.																
PLL circuitry is activated when the DIN terminal receives an input signal. erwise, the crystal vibrator is activated. ystal vibrator is activated, regardless of the DIN terminal input.																
s a 16.9344-MHz frequency when the crystal vibrator functions. When the PLL the frequency varies according to the speed of input data of the DIN terminal 4Hz when it is 44.2 kHz).																
s terminal is divided into a third of that of terminal $\emptyset A$ when the crystal vibrator PLL circuitry is activated, the frequency varies according to the speed of input data s=about 16.9344 when it is 44.2 kHz).																
terminal for checking the internal circuitry.																
terminal for checking the internal circuitry.																
ime-clock signal from the DO terminal.																
ynchronization signal.																
onnection terminal of the system (+0 V).																
a on the left channel is output from the DO terminal. on the right channel is output from the DO terminal.																
ut data is emphasized. l data is not emphasized.																
for checking data output to the DO terminal.																
ts the signal for the right channel.																
ts the signal for the left channel.																
inal. H=Error is found during parity check L=No errors																
<table border="1"> <thead> <tr> <th>Function</th> <th>Output</th> </tr> </thead> <tbody> <tr> <td>Function</td> <td>B2</td> </tr> <tr> <td>3 not (250kHz)</td> <td>L OC (except DAT)</td> </tr> <tr> <td>3 portable</td> <td>H DAT</td> </tr> <tr> <td></td> <td>L The sampling frequency of the DIN input signal is 44.1 kHz.</td> </tr> <tr> <td></td> <td>H 48 kHz</td> </tr> <tr> <td></td> <td>H 32 kHz</td> </tr> <tr> <td></td> <td>L ---</td> </tr> </tbody> </table>	Function	Output	Function	B2	3 not (250kHz)	L OC (except DAT)	3 portable	H DAT		L The sampling frequency of the DIN input signal is 44.1 kHz.		H 48 kHz		H 32 kHz		L ---
Function	Output															
Function	B2															
3 not (250kHz)	L OC (except DAT)															
3 portable	H DAT															
	L The sampling frequency of the DIN input signal is 44.1 kHz.															
	H 48 kHz															
	H 32 kHz															
	L ---															
ck-signal of the sub code output.																
sub code.																
b code data.																
3.																

•IC806 (YM3404B) Digital filter

Pin No.	Mark	I/O	Function
1	SHL	O	1DAC(ST="L"): Lch Deglitcher signal 2DAC(ST="H"): L/Rch Deglitcher signal
2	X0	O	Clock output
3	X1	I	Clock input
4	VDD2	I	Power supply (connected to +5V)
5	BCI	I	Bit clock input (input data)
6	SDSY	I	R/L signal
7	SDI	I	Data input
8	VDD1	I	Power supply (connected to +5V)
9	DLO	O	1DAC(ST="L"): L/Rch data output terminal 2DAC(ST="H"): Lch data output terminal
10	RDO	O	Rch data output (not connected)
11	WCO	O	Output data word clock
12	BCO	O	Bit clock output (output data)
13	VSS	I	GND terminal
14	ST	I	1DAC/2DAC selector terminal
15	FEN	I	System clock selector terminal
16	SHR	O	1DAC(SP="L"): Rch deglitch signal

RESISTORS AND CAPACITORS

Notes : * Important safety notice :

Components identified by Δ mark have special characteristics important for safety. When replacing any of these components use only manufacturer's specified parts.

* Bracketed indications in Ref. No. columns specify the area. (Refer to the first page for area.)
Parts without these indications can be used for all areas.

Numbering System For Resistors

Example:

ERD	25	F	J	102
Type	Wattage (1/4W)	Shape	Tolerance	Value (1K Ω)
ERX	2	AN	J	471
Type	Wattage (2W)	Shape	Tolerance	Value (470 Ω)

Numbering System For Capacitors

Example:

ECKD	1H	102	Z	F
Type	Voltage (50V)	Value (0.001 μ F)	Tolerance	Unique
ECEA	50	M		330
Type	Voltage (50V)	Characteristics		Value (33 μ F)

● Capacity values are in microfarads (μ F) unless specified otherwise, P= Pico-farads (pF) F= Farads (F).

● Resistance values are in ohms (Ω), unless specified otherwise, 1K= 1,000 Ω , 1M= 1,000k Ω

Resistor Type	Wattage		Tolerance
ERD : Carbon	10 : 1/8W	12 : 1/2W	J : \pm 5%
ERG : Metal Oxide	14 : 1/4W	25 : 1/4W	F : \pm 1%
ERQ : Fuse Type Metal	1A : 1W	18 : 1/8W	G : \pm 2%
ERX : Metal Film	S2 : 1/4W	S1 : 1/2W	J : \pm 5%
ERD L : Carbon (chip)	2F : 1/4W	50 : 1/2W	K : \pm 10%
ERO K : Metal Film (chip)	2A : 2W	3A : 3W	M : \pm 20%
ERC : Solid	6G : 1/10W	8G : 1/8W	
ERF : Incombustible Box-Shaped			
ERM : Wire-Wound			
RRJ : Chip Resistor			
ERJ : Chip Resistor			

Capacitor Type	Voltage		Tolerance
ECE : Electrolytic	0J : 6.3V	1A : 10V	K : \pm 10%
ECOD : Ceramic	1C : 16V	1E : 25V	M : \pm 20%
ECKD : Ceramic Capacitor	1H : 50V	1V : 35V	Z : +80 % -20
ECQM : Polyester	50 : 50V	05 : 50V	J : \pm 5%
ECOP : Polypropylene	2H : 500V	2A : 100V	G : \pm 2%
ECG : Ceramic	1 : 100V	1J : 63V	F : \pm 1%
ECEA N : Non Polar Electrolytic	KC : 400V AC		C : \pm 0.25pF
OCU : Ceramic (Chip Type)	KC : 125V AC		D : \pm 0.5pF
ECUX : Ceramic (Chip Type)	(UL)		
ECF : Semiconductor			
EECW : Liquid electrolyte double layer capacitor			

Ref. No.	Part No.	Value.	Ref. No.	Part No.	Value.	Ref. No.	Part No.	Value.
RESISTORS(VALUE,WATTAGE)								
R101	ERDS2TJ471	470 1/4	R221	ERDS2TJ102	1K 1/4	R317	ERDS2TJ562	5.6K 1/4
R102	ERDS2TJ471	470 1/4	R222	ERDS2TJ102	1K 1/4	R318	ERDS2TJ123	12K 1/4
R105	ERDS2TJ224	220K 1/4	R223	ERDS2TJ821	820 1/4	R320	ERDS2TJ224	220K 1/4
(EG)			R224	ERDS2TJ821	820 1/4	R321	ERDS2TJ332	3.3K 1/4
R106	ERDS2TJ224	220K 1/4	R227	ERDS2TJ102	1K 1/4	R322	ERDS2TJ332	3.3K 1/4
(EG)			R228	ERDS2TJ102	1K 1/4	R324	ERDS2TJ332	3.3K 1/4
R107	ERDS2TJ331	330 1/4	R229	ERDS2TJ392	3.9K 1/4	R325	ERDS2TJ392	3.9K 1/4
R108	ERDS2TJ331	330 1/4	R230	ERDS2TJ392	3.9K 1/4	R326	ERDS2TJ392	3.9K 1/4
R109	ERDS2TJ473	47K 1/4	R231	ERDS2TJ332	3.3K 1/4	R327	ERDS2TJ104	100K 1/4
(E, E5, EB)			R232	ERDS2TJ332	3.3K 1/4	R328	ERDS2TJ104	100K 1/4
R109	ERDS2TJ563	56K 1/4	R234	ERDS2TJ122	1.2K 1/4	R329	ERDS2TJ122	1.2K 1/4
(EG)			R235	ERDS2TJ223	22K 1/4	R331	ERDS2TJ105	1M 1/4
R110	ERDS2TJ473	47K 1/4	R236	ERDS2TJ223	22K 1/4	R332	ERDS2TJ334	330K 1/4
(E, E5, EB)			R237	ERDS2TJ223	22K 1/4	R351	ERDS2TJ103	10K 1/4
R110	ERDS2TJ563	56K 1/4	R238	ERDS2TJ152	1.5K 1/4	R352	ERDS2TJ103	10K 1/4
(EG)			R239	ERDS2TJ152	1.5K 1/4	R353	ERDS2TJ103	10K 1/4
R111	ERDS2TJ331	330 1/4	R251	ERDS2TJ102	1K 1/4	R354	ERDS2TJ103	10K 1/4
R112	ERDS2TJ331	330 1/4	R252	ERDS2TJ103	10K 1/4	R355	ERDS2TJ122	1.2K 1/4
R113	ERDS2TJ680	68 1/4	R253	ERDS2TJ103	10K 1/4	R356	ERDS2TJ122	1.2K 1/4
R114	ERDS2TJ680	68 1/4	R254	ERDS2TJ103	10K 1/4	R357	ERDS2TJ392	3.9K 1/4
R115	ERDS2TJ184	180K 1/4	R257	ERDS2TJ224	220K 1/4	R358	ERDS2TJ392	3.9K 1/4
R116	ERDS2TJ184	180K 1/4	R258	ERDS2TJ224	220K 1/4	R359	ERDS2TJ103	10K 1/4
R117	ERDS2TJ123	12K 1/4	R259	ERDS2TJ104	100K 1/4	R360	ERDS2TJ103	10K 1/4
R118	ERDS2TJ123	12K 1/4	R260	ERDS2TJ104	100K 1/4	R361	ERDS2TJ273	27K 1/4
R119	ERDS2TJ104	100K 1/4	R263	ERDS2TJ331	330 1/4	R362	ERDS2TJ273	27K 1/4
R120	ERDS2TJ104	100K 1/4	R264	ERDS2TJ331	330 1/4	R363	ERDS2TJ103	10K 1/4
R201	ERDS2TJ102	1K 1/4	R265	ERDS2TJ224	220K 1/4	R364	ERDS2TJ103	10K 1/4
R202	ERDS2TJ102	1K 1/4	R266	ERDS2TJ224	220K 1/4	R365	ERDS2TJ122	1.2K 1/4
R203	ERDS2TJ822	8.2K 1/4	R301	ERDS2TJ223	22K 1/4	R401	ERDS2TJ223	22K 1/4
R204	ERDS2TJ822	8.2K 1/4	R302	ERDS2TJ223	22K 1/4	R402	ERDS2TJ223	22K 1/4
R205	ERDS2TJ102	1K 1/4	R303	ERDS2TJ223	22K 1/4	R405	ERDS2TJ563	56K 1/4
R206	ERDS2TJ102	1K 1/4	R304	ERDS2TJ223	22K 1/4	R406	ERDS2TJ563	56K 1/4
R207	ERDS2TJ102	1K 1/4	R307	ERDS2TJ332	3.3K 1/4	R409	ERDS2TJ333	33K 1/4
R208	ERDS2TJ102	1K 1/4	R308	ERDS2TJ332	3.3K 1/4	R410	ERDS2TJ333	33K 1/4
R213	ERDS2TJ471	470 1/4	R309	ERDS2TJ223	22K 1/4	R415	ERDS2TJ821	820 1/4
R214	ERDS2TJ471	470 1/4	R310	ERDS2TJ393	39K 1/4	R416	ERDS2TJ821	820 1/4
R215	ERDS2TJ182	1.8K 1/4	R311	ERDS2TJ223	22K 1/4	R417	ERDS2TJ391	390 1/4
R216	ERDS2TJ182	1.8K 1/4	R312	ERDS2TJ393	39K 1/4	R418	ERDS2TJ391	390 1/4
R217	ERDS2TJ472	4.7K 1/4	R313	ERDS2TJ223	22K 1/4	R419	ERDS2TJ273	27K 1/4
R218	ERDS2TJ472	4.7K 1/4	R314	ERDS2TJ223	22K 1/4	R420	ERDS2TJ273	27K 1/4
			R315	ERDS2TJ223	22K 1/4	R423	ERDS2TJ153	15K 1/4
			R316	ERDS2TJ822	8.2K 1/4	R424	ERDS2TJ153	15K 1/4

Ref. No.	Part No.	Value.	Ref. No.	Part No.	Value.	Ref. No.	Part No.	Value.
R425	ERDS2T J152	1.5K 1/4	R552	△ ERDS1FJ331	330 1/2	R701	△ ERDS1FJ2R2	2.2 1/2
R426	ERDS2T J152	1.5K 1/4	R553	ERDS2T J153	15K 1/4	R702	△ ERD25FJ3R3	3.3 1/4
R427	ERDS2T J152	1.5K 1/4	R554	ERDS2T J103	10K 1/4	R703	ERDS2T J682	6.8K 1/4
R428	ERDS2T J152	1.5K 1/4	R565	ERDS2T J473	47K 1/4	R704	ERDS2T J822	8.2K 1/4
R429	ERDS2T J822	8.2K 1/4	R566	ERDS2T J473	47K 1/4	R705	ERDS2T J333	33K 1/4
R430	ERDS2T J822	8.2K 1/4	R567	ERDS2T J473	47K 1/4	R706	△ ERDS1FJ100	10 1/2
R431	ERDS2T J102	1K 1/4	R568	ERDS2T J473	47K 1/4	R707	△ ERDS2T J222	2.2K 1/4
R432	ERDS2T J102	1K 1/4	R570	△ ERG3ANJ102	1K 3	R708	ERDS2T J682	6.8K 1/4
R434	ERDS2T J105	1M 1/4	R571	ERDS2TKF4220	422 1/4	R710	△ ERDS1FJ331	330 1/2
R435	ERDS2T J334	330K 1/4	R572	ERDS2TKF4220	422 1/4	R711	ERDS2T J272	2.7K 1/4
R438	ERDS2T J105	1M 1/4	R573	ERDS2TKF1000	100 1/4	R733	ERDS2T J153	15K 1/4
R439	ERDS2T J103	10K 1/4	R574	ERDS2TKF1000	100 1/4	R734	ERDS2T J684	680K 1/4
R442	ERDS2T J272	2.7K 1/4	R575	ERDS2TKF1000	100 1/4	R735	ERDS2T J104	100K 1/4
R443	ERDS2T J102	1K 1/4	R576	ERDS2TKF1000	100 1/4	R736	ERDS2T J223	22K 1/4
R444	ERDS2T J102	1K 1/4	R577	ERD2FCG271	270 1/4	R800	ERDS2T J221	220 1/4
R451	ERDS2T J224	220K 1/4	R578	ERD2FCG271	270 1/4	R801	ERDS2T J102	1K 1/4
R452	ERDS2T J224	220K 1/4	R579	ERDS2T J271	270 1/4	R802	ERDS2T J103	10K 1/4
R453	ERDS2T J474	470K 1/4	R580	ERDS2T J271	270 1/4	R803	ERDS2T J101	100 1/4
R454	ERDS2T J474	470K 1/4	R581	ERDS2T J153	15K 1/4	R804	ERDS2T J101	100 1/4
R455	ERDS2T J102	1K 1/4	R582	ERDS2T J153	15K 1/4	R805	ERDS2T J821	820 1/4
R456	ERDS2T J102	1K 1/4	R585	ERDS2T J472	4.7K 1/4	R806	ERDS2T J151	150 1/4
R457	ERDS2T J822	8.2K 1/4	R586	ERDS2T J472	4.7K 1/4	R807	ERDS2T J102	1K 1/4
R458	ERDS2T J822	8.2K 1/4	R587	△ ERDS1FJ100	10 1/2	R808	ERDS2T J105	1M 1/4
R461	ERDS2T J223	22K 1/4	R588	△ ERDS1FJ100	10 1/2	R809	ERDS2T J223	22K 1/4
R462	ERDS2T J223	22K 1/4	R589	△ ERDS1FJ100	10 1/2	R810	ERDS2T J471	470 1/4
R463	ERDS2T J392	3.9K 1/4	R590	△ ERDS1FJ100	10 1/2	R811	ERDS2T J101	100 1/4
R464	ERDS2T J392	3.9K 1/4	R591	△ ERG2ANJP331S	330 2	R812	ERDS2T J103	10K 1/4
R465	ERDS2T J333	33K 1/4	R592	△ ERG2ANJP331S	330 2	R813	ERDS2T J104	100K 1/4
R466	ERDS2T J333	33K 1/4	R593	ERDS2T J223	22K 1/4	R814	ERDS2T J223	22K 1/4
R467	ERDS2T J182	1.8K 1/4	R594	ERDS2T J223	22K 1/4	R816	ERDS2T J562	5.6K 1/4
R468	ERDS2T J182	1.8K 1/4	R595	ERDS2T J223	22K 1/4	R817	ERDS2T J564	560K 1/4
R469	ERDS2T J821	820 1/4	R596	ERDS2T J223	22K 1/4	R818	ERDS2T J564	560K 1/4
R470	ERDS2T J821	820 1/4	R601	ERDS2T J223	22K 1/4	R819	ERDS2T J184	180K 1/4
R471	ERDS2T J152	1.5K 1/4	R602	ERDS2T J103	10K 1/4	R820	ERDS2T J184	180K 1/4
R472	ERDS2T J152	1.5K 1/4	R603	ERDS2T J103	10K 1/4	R821	ERDS2T J394	390K 1/4
R473	ERDS2T J152	1.5K 1/4	R610	ERDS2T J102	1K 1/4	R822	ERDS2T J394	390K 1/4
R474	ERDS2T J152	1.5K 1/4	R611	ERDS2T J102	1K 1/4	R823	ERDS2T J102	1K 1/4
R475	ERDS2T J102	1K 1/4	R612	ERDS2T J102	1K 1/4	R824	ERDS2T J102	1K 1/4
R476	ERDS2T J102	1K 1/4	R613	ERDS2T J102	1K 1/4	R825	ERDS2T J475T	
R478	ERDS2T J272	2.7K 1/4	R614	ERDS2T J102	1K 1/4	R826	ERDS2T J475T	
R501	ERDS2T J222	2.2K 1/4	R615	ERDS2T J102	1K 1/4	R827	ERDS2T J272	2.7K 1/4
R502	ERDS2T J222	2.2K 1/4	R616	ERDS2T J102	1K 1/4	R828	ERDS2T J272	2.7K 1/4
R503	ERDS2T J473	47K 1/4	R617	ERDS2T J102	1K 1/4	R829	ERDS2T J222	2.2K 1/4
R504	ERDS2T J473	47K 1/4	R618	ERDS2T J822	8.2K 1/4	R830	ERDS2T J222	2.2K 1/4
R505	ERDS2T J392	3.9K 1/4	R619	ERDS2T J272	2.7K 1/4	R831	ERDS2T J102	1K 1/4
R506	ERDS2T J392	3.9K 1/4	R620	ERDS2T J122	1.2K 1/4	R832	ERDS2T J102	1K 1/4
R507	ERDS2T J681	680 1/4	R621	ERDS2T J272	2.7K 1/4	R833	ERDS2T J474	470K 1/4
R508	△ ERDS2T J681	680 1/4	R622	ERDS2T J332	3.3K 1/4	R834	ERDS2T J474	470K 1/4
R509	△ ERD25FJ470	47 1/4	R623	ERDS2T J223	22K 1/4	R835	ERDS2T J473	47K 1/4
R510	△ ERD25FJ470	47 1/4	R624	ERDS2T J223	22K 1/4	R836	ERDS2T J473	47K 1/4
R513	△ ERD25FJ470	47 1/4	R625	ERDS2T J104	100K 1/4	R837	ERDS2T J102	1K 1/4
R514	ERDS2T J823	82K 1/4	R626	ERDS2T J105	1M 1/4	R838	ERDS2T J102	1K 1/4
R525	ERDS2T J182	1.8K 1/4	R627	ERDS2T J102	1K 1/4	R839	ERDS2T J102	1K 1/4
R526	ERDS2T J182	1.8K 1/4	R628	ERDS2T J104	100K 1/4	R840	ERDS2T J102	1K 1/4
R527	ERDS2T J331	330 1/4	R631	ERDS2T J102	1K 1/4	R841	ERDS2T J822	8.2K 1/4
R528	ERDS2T J331	330 1/4	R632	ERDS2T J102	1K 1/4	R842	ERDS2T J822	8.2K 1/4
R529	ERDS2T J332	3.3K 1/4	R633	ERDS2T J153	15K 1/4	R843	ERDS2T J474	470K 1/4
R530	ERDS2T J332	3.3K 1/4	R634	ERDS2T J153	15K 1/4	R844	ERDS2T J272	2.7K 1/4
R531	ERDS2T J332	3.3K 1/4	R635	ERDS2T J473	47K 1/4	R845	ERDS2T J104	100K 1/4
R532	ERDS2T J332	3.3K 1/4	R636	ERDS2T J473	47K 1/4	R846	ERDS2T J332	3.3K 1/4
R533	ERDS2T J223	22K 1/4	R637	ERDS2T J330	33 1/4	R847	ERDS2T J224	220K 1/4
R534	ERDS2T J223	22K 1/4	R638	ERDS2T J101	100 1/4	R848	ERDS2T J103	10K 1/4
R535	ERDS2T J223	22K 1/4	R639	ERDS2T J101	100 1/4	R849	ERDS2T J272	2.7K 1/4
R536	ERDS2T J223	22K 1/4	R640	ERDS2T J105	1M 1/4	R850	ERDS2T J103	10K 1/4
R537	△ ERD25FVJ681T		R641	ERDS2T J220	22 1/4	R851	△ ERDS1FJ331	330 1/2
R538	△ ERD25FVJ681T		R645	ERDS2T J102	1K 1/4	R852	△ ERDS1FJ331	330 1/2
R539	△ ERD25FJ101	100 1/4	R646	ERDS2T J102	1K 1/4	R853	△ ERDS1FJ331	330 1/2
R540	△ ERD25FJ101	100 1/4	R651	ERDS2T J221	220 1/4			
R541	△ ERD25FJ101	100 1/4	R652	ERDS2T J221	220 1/4	CAPACITORS(VALUE,VOLTAGE)		
R542	△ ERD25FJ101	100 1/4	R653	ERDS2T J221	220 1/4	C101, C102 [EG]	RCBC1H180JLY	18P 50
R543	△ ERD25FJ2R2	2.2 1/4	R654	ERDS2T J121	120 1/4	C103	RCBC1H151KBY	150P 50
R544	△ ERD25FJ2R2	2.2 1/4	R655	ERDS2T J121	120 1/4	[EG]		
R545	△ ERD25FJ2R2	2.2 1/4	R656	ERDS2T J221	220 1/4	C104	RCBC1H151KBY	150P 50
R546	△ ERD25FJ2R2	2.2 1/4	R657	ERDS2T J221	220 1/4	[EG]		
R547	△ ERD25FJ6R8	6.8 1/4	R658	ERDS2T J471	470 1/4	C105	ECEA1HPS3R3	3.3 50
R548	△ ERD25FJ6R8	6.8 1/4	R659	ERDS2T J121	120 1/4	C106	ECEA1HPS3R3	3.3 50
R551	ERDS2T J103	10K 1/4	R660	ERDS2T J121	120 1/4	C107	RCBC1H101KBY	100P 50
						C108	RCBC1H101KBY	100P 50

Ref. No.	Part No.	Value.	Ref. No.	Part No.	Value.	Ref. No.	Part No.	Value.
C109	ECBT1H102KB5	0.001 50	C318	ECKD1H223PF	0.022 50	C514	RCBS1H6R8KLY	6.8P 50
C110	ECBT1H102KB5	0.001 50	C351	ECEA1E103ZF	0.01 25	C515	ECEA2AU010	1 100
C111	ECEA0JPS330	33 6.3	C352	ECBT1E103ZF	0.01 25	C516	ECEA1HK010	1 50
C112	ECEA0JPS330	33 6.3	C353	RCBS1H330JLY	33P 50	C525	ECKD1H333PF	0.033 50
C115	ECFTD223KXL	0.022 25	C354	RCBS1H330JLY	33P 50	C526	ECKD1H333PF	0.033 50
C116	ECFTD223KXL	0.022 25	C355	ECEA1HPS3R3	3.3 50	C527	ECEA1VU330	33 35
C117	ECFTD682KXL	0.0068 25	C356	ECEA1HPS3R3	3.3 50	C528	ECEA1VU330	33 35
C118	ECFTD682KXL	0.0068 25	C357	ECEA1HPS3R3	3.3 50	C531	RCBC1H680JLY	68P 50
C119	ECEA1HPS3R3	3.3 50	C358	ECEA1HPS3R3	3.3 50	C532	RCBC1H680JLY	68P 50
C120	ECEA1HPS3R3	3.3 50	C359	RCBS1H330JLY	33P 50	C533	RCBC1H680JLY	68P 50
C121	ECFTD103KXL	0.01 25	C360	RCBS1H330JLY	33P 50	C534	RCBC1H680JLY	68P 50
C122	ECFTD103KXL	0.01 25	C361	ECEA1HPS3R3	3.3 50	C535	ECEA1HK010	1 50
C123	ECKD1H473ZF	0.047 50	C362	ECEA1HPS3R3	3.3 50	C536	ECEA1HK010	1 50
C124	ECFTD103KXL	0.01 25	C363	ECEA1HPS3R3	3.3 50	C551	ECEA1CK5100	10 16
(EG)			C364	ECEA1HPS3R3	3.3 50	C552	ECEA1CK470	47 16
C201	ECEA1HPS3R3	3.3 50	C365	ECEA1CK220	22 16	C553	ECEA1CK101	100 16
C202	ECEA1HPS3R3	3.3 50	C367	ECEA1CK220	22 16	C561	ECKD1H102KB	1000P 50
C203	ECEA1HPS3R3	3.3 50	C369	ECEA1CK5100	10 16	(EG)		
C204	ECEA1HPS3R3	3.3 50	C370	ECEA1CK5100	10 16	C562	ECKD1H102KB	1000P 50
C205	ECEA1HPS3R3	3.3 50	C373	RCBS1H820KBY	82P 50	(EG)		
C206	ECEA1HPS3R3	3.3 50	(EG)			C563	ECKD1H223PF	0.022 50
C220	ECKD1H473ZF	0.047 50	C374	RCBS1H820KBY	82P 50	(EG)		
C222	ECEA1CK220	22 16	(EG)			C564	ECKD1H223PF	0.022 50
C223	ECEA1CK220	22 16	C401	ECEA1EK3R3B	3.3 25	(EG)		
C224	ECKD1H223PF	0.022 50	C402	ECEA1EK3R3B	3.3 25	C565	ECKD1H102KB	1000P 50
C225	ECKD1H223PF	0.022 50	C409	RCBC1H101KBY	100P 50	(EG)		
C226	ECKD1H473ZF	0.047 50	C410	RCBC1H101KBY	100P 50	C566	ECKD1H102KB	1000P 50
C227	ECQM1H104JZP	0.1 50	C411	RCBS1H100JLY	10P 50	(EG)		
C251	RCBC1H101KBY	100P 50	C412	RCBS1H100JLY	10P 50	C567	ECKD1H223PF	0.022 50
(EG)			C413	ECEA1HK2R2B	2.2 50	(EG)		
C252	RCBC1H101KBY	100P 50	C414	ECEA1HK2R2B	2.2 50	C568	ECKD1H223PF	0.022 50
(EG)			C419	ECFTD473KXL	0.047 25	(EG)		
C253	RCBC1H101KBY	100P 50	C420	ECFTD473KXL	0.047 25	C569	RCBC1H180JLY	18P 50
(EG)			C421	ECEA1HK2R2B	2.2 50	C570	RCBC1H180JLY	18P 50
C254	RCBC1H101KBY	100P 50	C422	ECEA1HK2R2B	2.2 50	C571	RCBS1H330JLY	33P 50
(EG)			C423	ECEA1HPS3R3	3.3 50	C572	RCBS1H330JLY	33P 50
C255	RCBC1H101KBY	100P 50	C424	ECEA1HPS3R3	3.3 50	C573	RCBC1H560JLY	56P 50
(EG)			C425	ECEA1HPS3R3	3.3 50	C574	RCBC1H560JLY	56P 50
C256	RCBC1H101KBY	100P 50	C426	ECEA1HPS3R3	3.3 50	C575	ECKD1H392KB	0.0039 50
(EG)			C427	ECEA1HPS3R3	3.3 50	C576	ECKD1H392KB	0.0039 50
C257	RCBC1H101KBY	100P 50	C428	ECEA1HPS3R3	3.3 50	C577	ECEA1HK010	1 50
(EG)			C431	ECFTD683KXL	0.068 25	C578	ECEA1HK010	1 50
C258	RCBC1H101KBY	100P 50	C432	ECEA1HK010	1 50	C579	RCBS1H330JLY	33P 50
(EG)			C451	RCBC1H101KBY	100P 50	C580	RCBS1H330JLY	33P 50
C261	RCBC1H101KBY	100P 50	C452	RCBC1H101KBY	100P 50	C581	ECEA1AU101	100 10
(EG)			C453	RCBC1H680JLY	68P 50	C582	ECEA1AU101	100 10
C262	RCBC1H101KBY	100P 50	C454	RCBC1H680JLY	68P 50	C583	ECEA1AU101	100 10
(EG)			C455	ECBT1H821KB5	820P 50	C584	ECEA1AU101	100 10
C263	RCBC1H101KBY	100P 50	C456	ECBT1H821KB5	820P 50	C585	ECBT1H821KB5	820P 50
(EG)			C457	ECFTD123KXL	0.012 25	C586	ECBT1H821KB5	820P 50
C264	RCBC1H101KBY	100P 50	C458	ECFTD123KXL	0.012 25	C587	ECKD1H472ZF	0.0047 50
(EG)			C459	ECFTD683KXL	0.068 25	C588	ECKD1H472ZF	0.0047 50
C265	RCBC1H101KBY	100P 50	C460	ECFTD683KXL	0.068 25	C589	ECKD1H333PF	0.033 50
(EG)			C461	ECEA1HPS010	1 50	C590	ECKD1H333PF	0.033 50
C266	RCBC1H101KBY	100P 50	C462	ECEA1HPS010	1 50	C591	ECKD1H333PF	0.033 50
(EG)			C463	ECFTD472KXL	4700P 25	C592	ECKD1H333PF	0.033 50
C267	RCBC1H101KBY	100P 50	C464	ECFTD472KXL	4700P 25	C593	ECFTD473KXL	0.047 25
(EG)			C465	ECFTD223KXL	0.022 25	C594	ECFTD473KXL	0.047 25
C268	RCBC1H101KBY	100P 50	C466	ECFTD223KXL	0.022 25	C595	ECFTD473KXL	0.047 25
(EG)			C467	ECEA1HPS3R3	3.3 50	C596	ECFTD473KXL	0.047 25
C269	RCBC1H101KBY	100P 50	C468	ECEA1HPS3R3	3.3 50	C597	ECKD1H221KB	220P 50
(EG)			C469	ECFTD103KXL	0.01 25	(EG)		
C270	RCBC1H101KBY	100P 50	C470	ECFTD103KXL	0.01 25	C598	ECKD1H221KB	220P 50
(EG)			C471	ECEA1CK470	47 16	(EG)		
C271	RCBC1H101KBY	100P 50	C501	ECEA1HPS3R3	3.3 50	C600	ECEA1CK5100	10 16
(EG)			C502	ECEA1HPS3R3	3.3 50	C601	ECEA0JS102	1000 6.3
C272	RCBC1H101KBY	100P 50	C503	RCBC1H151KBY	150P 50	C602	ECKD1H223PF	0.022 50
(EG)			C504	RCBC1H151KBY	150P 50	C603	ECEA1HK010	1 50
C307	RCBC1H680JLY	68P 50	C505	ECEA1CK220	22 16	C604	ECFTD333KXL	0.033 25
C308	ECFTD682KXL	0.068 25	C506	ECEA1CK220	22 16	C605	ECFTD683KXL	0.068 25
C309	ECEA1EK3R3B	3.3 25	C507	RCBS1H820KBY	82P 50	C606	ECEA1EK4R7	4.7 25
C310	RCBS1H221KBY	220P 50	C508	RCBS1H820KBY	82P 50	C607	ECEA1HK010	1 50
C311	ECEA1EK3R3B	3.3 25	C509	ECBT1H102KB5	0.001 50	C608	ECBT1H102KB5	0.001 50
C313	RCBS1H820KBY	82P 50	C510	ECBT1H102KB5	0.001 50	C609	ECBT1H102KB5	0.001 50
C314	RCBS1H820KBY	82P 50	C511	ECFTD103KXL	0.01 25	C610	ECEA1CK5100	10 16
C315	ECEA1HPS3R3	3.3 50	C512	ECFTD103KXL	0.01 25	C611	RCBC1H101KBY	100P 50
C316	ECEA1HPS3R3	3.3 50	C513	RCBS1H6R8KLY	6.8P 50	C612	RCBC1H101KBY	100P 50

Ref. No.	Part No.	Value.	Ref. No.	Part No.	Value.	Ref. No.	Part No.	Value.
C613	RCBS1H221KBY	220P 50	C700	△ ECKDKC103PF2	0.01 125	C806	ECEA0JK101	100 6.3
C614	RCBS1H221KBY	220P 50	C701	ECE1JU682U	6800 63	C807	ECFD1H104ZF	0.1 50
C615	ECEA1VKA330	33 35	C702	ECES1JU682U	6800 63	C808	ECEA0JK101	100 6.3
C616	ECEA1HK2R2B	2.2 50	C703	ECFTD103KXL	0.01 25	C809	ECFD1H104ZF	0.1 50
C617	ECEA1HK2R2B	2.2 50	C704	ECFTD103KXL	0.01 25	C810	ECQ1H103JZ	0.01 50
C618	ECKD1H223PF	0.022 50	C705	ECEA1CU470	47 16	C811	RCBS1H100JLY	10P 50
C619	ECFTD103KXL	0.01 25	C706	ECEA1CU470	47 16	C812	RCBS1H100JLY	10P 50
C620	ECKF1H103ZF	0.01 50	C707	ECEA1CK220	22 16	C813	ECEA1EK4R7	4.7 25
C621	ECKF1H103ZF	0.01 50	C708	ECEA1CK220	22 16	C814	ECFD1H104ZF	0.1 50
C622	ECKF1H103ZF	0.01 50	C709	ECQ1E2104KS	0.1 250	C815	ECEA0JK101	100 6.3
C623	ECKF1H103ZF	0.01 50	C710	ECEA1HK4R7	4.7 50	C816	RCBS1H6R8KLY	6.8P 50
C624	ECKF1H103ZF	0.01 50	C711	ECEA1VK100B	10 35	C817	ECFD1H104ZF	0.1 50
C625	ECKF1H103ZF	0.01 50	C712	ECEA1VK100B	10 35	C819	ECEA0JK470	47 6.3
C626	ECKD1H473ZF	0.047 50	C714	ECEA1HK010	1 50	C820	ECEA0JK101	100 6.3
C627	ECKF1H103ZF	0.01 50	C715	ECFTD473KXL	0.047 25	C821	ECEA0JK470	47 6.3
C628	ECKF1H103ZF	0.01 50	(EG)			C822	ECEA0JK470	47 6.3
C629	ECKD1H102KB	1000P 50	C731	ECEA0JS331	330 6.3	C823	ECEA1CKN100B	10 16
C630	ECKF1H103ZF	0.01 50	C732	ECFTD123KXL	0.012 25	C824	ECEA1EK4R7	4.7 25
C631	ECKF1H103ZF	0.01 50	C733	ECEA0JK330	33 6.3	C825	ECEA1EKN4R7	
C632	ECKF1H103ZF	0.01 50	C734	ECEA1CKS100	10 16	C826	ECEA1EKN4R7	
C630	ECKD1H473ZF	0.047 50	C801	RCBS1H271KBY	270P 50	C827	ECBT1H102KB5	0.001 50
C631	ECKD1H473ZF	0.047 50	C802	RCBS1H271KBY	270P 50	C828	ECBT1H102KB5	0.001 50
C637	ECQV1H474JZ3	0.47 50	C803	ECEA0JK101	100 6.3	C829	ECBT1E223ZF	0.022 25
C638	RCBS1H221KBY	220P 50	C804	ECEA0JK101	100 6.3	C830	ECBT1E223ZF	0.022 25
C639	RCBS1H221KBY	220P 50	C805	ECEA0JK101	100 6.3	C831	ECFD1H104ZF	0.1 50

REPLACEMENT PARTS LIST

Notes : * Important safety notice :

Components identified by Δ mark have special characteristics important for safety. When replacing any of these components use only manufacturer's specified parts.

* Bracketed indications in Ref. No. columns specify the area. (Refer to the first page for area.)

Parts without these indications can be used for all areas.

Ref. No.	Part No.	Description	Ref. No.	Part No.	Description
INTEGRATED CIRCUITS			Q514	2SC32980Y	TRANSISTOR
IC101	AN6558F	I.C. PHONO EQ AMP	Q515	2SA13060Y	TRANSISTOR
IC200	TC4066BF	I.C. CD INPUT SELECTOR	Q516	2SA13060Y	TRANSISTOR
IC201	TC9164N	I.C. INPUT SELECTOR	Q517	2SC2631-Q	TRANSISTOR
IC301	M5238P	I.C. PHASE SHIFT	Q518	2SC2631-Q	TRANSISTOR
IC302	AN6554F	I.C. MIXING AMP	Q519	2SA1123R	TRANSISTOR
IC303	AN6558F	I.C. BUFFER AMP	Q520	2SA1123R	TRANSISTOR
IC304	AN6557F	I.C. BUFFER AMP	Q521	2SA992E	TRANSISTOR
IC305	AN6557F	I.C. MIXING AMP	Q522	2SA992E	TRANSISTOR
IC306	M51131L-702	I.C. ATTENUATOR	Q523	2SC3311A-Q	TRANSISTOR
IC307	M51131L-702	I.C. ATTENUATOR	Q524	2SA1309AQS	TRANSISTOR
IC402	AN6554F	I.C. PRE AMP	Q601	UN4111	TRANSISTOR
IC403	AN6558F	I.C. TONE AMP	Q602	UN4111	TRANSISTOR
IC500	AN7062N	I.C. VOLTAGE AMP	Q603	UN4211	TRANSISTOR
IC501	SV14004	I.C., POWER AMP	Q604	2SC3311A-Q	TRANSISTOR
IC601	M5075A-411SP	I.C. MICRO COMPUTER	Q611	UN4211	TRANSISTOR
IC602	MN4030B	I.C., LOGIC	Q612	UN4211	TRANSISTOR
IC603	MN4013B	I.C. LOGIC	Q613	UN4211	TRANSISTOR
IC604	AN6552F	I.C. BUFFER AMP	Q614	UN4211	TRANSISTOR
IC701	AN78M05R	I.C. REGULATOR	Q615	UN4211	TRANSISTOR
IC702	AN7073	I.C. PROTECTION/MUT	Q616	UN4211	TRANSISTOR
IC801	SV1TORX172	I.C. OPTICAL REC.	Q617	UN4211	TRANSISTOR
IC802	SV1TORX172	I.C. OPTICAL REC.	Q618	UN4111	TRANSISTOR
IC803	TC74HC004AF	I.C. INVERTER	Q619	UN4111	TRANSISTOR
IC804	TC74HC4053AF	I.C. DIGITAL INPUT	Q621	2SC3311A-Q	TRANSISTOR
IC805	YM3623B	I.C. DIGITAL SIGNAL	Q622	UN4211	TRANSISTOR
IC806	YM3404B	I.C. DIGITAL FILTER	Q701	2SD1265-P	TRANSISTOR
IC807	PCM56P-L	I.C. D/A CONVERTER	Q702	2SB941PQR	TRANSISTOR
IC808	PCM56P-L	I.C. D/A CONVERTER	Q703	UN4211	TRANSISTOR
IC809	TC74HC164AF	I.C. 8 BIT SIFT RESISTOR	Q704	2SB621A-R	TRANSISTOR
IC810	TC74HC164AF	I.C. 8 BIT SIFT RESISTOR	Q705	2SD1265-P	TRANSISTOR
IC811	TC74HC00AF	I.C. NAND GATE	Q801	UN4211	TRANSISTOR
IC812	MN6636S	I.C. ANALOG SWITCH	Q802	2SB1030Q	TRANSISTOR
IC813	LM833M63	I.C., BUFFER AMP	Q803	2SC3311A-Q	TRANSISTOR
IC814	SV1BA4560F	I.C. BUFFER AMP	Q804	2SC3311A-Q	TRANSISTOR
IC815	SV1H8DN2041B	I.C. LOW PASS FILTER	Q805	2SD1450R	TRANSISTOR
IC816	SV1H8DN2041B	I.C. LOW PASS FILTER	Q806	2SD1450R	TRANSISTOR
IC817	DN74LS145S	I.C. LED DRIVE	Q807	UN4111	TRANSISTOR
IC818	TC74HC123AF	I.C. MULTIVIBRATOR	Q808	UN4111	TRANSISTOR
TRANSISTORS			Q809	UN4211	TRANSISTOR
Q200	2SC3311A-Q	TRANSISTOR	Q810	UN4211	TRANSISTOR
Q201	2SC3311A-Q	TRANSISTOR	Q811	2SA1309A-R	TRANSISTOR
Q202	2SC3311A-Q	TRANSISTOR	Q812	2SA1309AQS	TRANSISTOR
Q203	DTA114ESTP	TRANSISTOR	DIODES		
Q301	2SD1450R	TRANSISTOR	D201	MA4051-M	DIODE
Q303	DTA114ESTP	TRANSISTOR	D203	MA4082	DIODE
Q401	2SD1450R	TRANSISTOR	D204	MA4082	DIODE
Q402	2SD1450R	TRANSISTOR	D403	MA165	DIODE
Q403	DTA114ESTP	TRANSISTOR	D405	MA165	DIODE
Q404	2SD1450R	TRANSISTOR	D501	MA167	DIODE
Q405	2SD1450R	TRANSISTOR	D502	MA167	DIODE
Q406	DTA114ESTP	TRANSISTOR	D503	MA29WA	DIODE
Q407	2SC3311A-Q	TRANSISTOR	D504	MA29WA	DIODE
Q408	2SC3311A-Q	TRANSISTOR	D505	MA4120	DIODE
Q409	DTA114ESTP	TRANSISTOR	D506	MA4120	DIODE
Q500	2SA992E	TRANSISTOR	D507	MA165	DIODE
Q501	2SA1123R	TRANSISTOR	D509	MA167	DIODE
Q502	2SA1123R	TRANSISTOR	D510	MA167	DIODE
Q503	2SC1685NCQRS	TRANSISTOR	D511	MA167	DIODE
Q504	2SC1685NCQRS	TRANSISTOR	D512	MA167	DIODE
Q505	2SC3311A-Q	TRANSISTOR	D525	MA165	DIODE
Q506	2SC3311A-Q	TRANSISTOR	D526	MA165	DIODE
Q507	2SA1309AQS	TRANSISTOR	D527	MA165	DIODE
Q508	2SA1309AQS	TRANSISTOR	D528	MA165	DIODE
Q509	2SC2631-Q	TRANSISTOR	D529	MA4062-M	DIODE
Q510	2SC2631-Q	TRANSISTOR	D530	MA4062-M	DIODE
Q511	2SA1123R	TRANSISTOR	D531	MA165	DIODE
Q512	2SA1123R	TRANSISTOR	D532	MA165	DIODE
Q513	2SC32980Y	TRANSISTOR	D575	MA29WA	DIODE
			D601	MA165	DIODE

Ref. No.	Part No.	Description	Ref. No.	Part No.	Description
D602	MA165	DIODE	VR403	EWHFDAF20G15	V.R. BALANCE
D603	MA165	DIODE	VR501	EVND4AA00B52	V.R. IDLING ADJ.(LCH)
D605	MA165	DIODE	VR502	EVND4AA00B52	V.R. IDLING ADJ.(RCH)
D606	MA165	DIODE	VR601	EVQWX2F2045B	V.R., VOLUME ENCODER
D607	MA165	DIODE	THERMISTORS AND VARISTORS		
D608	MA700A	DIODE	TH501	ERTD2ZHK104S	TERMISTOR
D609	MA700A	DIODE	TH502	ERTD2ZHK104S	TERMISTOR
D610	MA700A	DIODE	COILS AND TRANSFORMERS		
D611	MA165	DIODE	L301	RLQZP100KT-Y	COIL
D612	MA165	DIODE	L501	SLQY07G-40	CHOKE COIL
D613	MA165	DIODE	L502	SLQY07G-40	CHOKE COIL
D615	MA165	DIODE	L503	SLQY07G-40	CHOKE COIL
D616	MA165	DIODE	L504	SLQY07G-40	CHOKE COIL
D617	MA165	DIODE	L505	SLQY07G-40	CHOKE COIL
D618	MA4082	DIODE	(EG)		
D619	MA165	DIODE	L506	SLQY07G-40	CHOKE COIL
D620	MA165	DIODE	(EG)		
D621	MA165	DIODE	L507	SLQY07G-40	CHOKE COIL
D622	MA165	DIODE	(EG)		
D623	MA165	DIODE	L508	SLQY07G-40	CHOKE COIL
D624	MA165	DIODE	(EG)		
D625	MA165	DIODE	L601	RLQZP101KT-Y	COIL
D626	MA165	DIODE	L603	ELEXT330KA9	COIL
D627	MA165	DIODE	L604	ELEXT330KA9	COIL
D631	LN846RP-C	L.E.D	L605	ELEPK1R2MA	COIL
D632	LN846RP-C	L.E.D	L609	ELEXT330KA9	COIL
D633	LN846RP-C	L.E.D	L610	RLQZP1R2KT-Y	CHOKE COIL
D634	LN0202RP2	DIODE	L801	RLQZP101KT-Y	COIL
D635	LN0202RP2	DIODE	L802	RLQZP101KT-Y	COIL
D636	LN846RP-C	L.E.D	L803	ELEXT470KA9	COIL
D637	LN846RP-C	L.E.D	L804	ELEXT470KA9	COIL
D638	LN873RP-LS	DIODE	L805	ELEXT470KA9	COIL
D641	MA165	DIODE	L806	RLQZP101KT-Y	COIL
D642	MA165	DIODE	T700	△ SLT5P288-W	POWER TRANSFORMER
D643	MA165	DIODE	(EB)		
D644	MA165	DIODE	T700	△ SLT5P289-W	POWER TRANSFORMER
D645	MA165	DIODE	(E, E5, EG)		
D646	MA165	DIODE	COMPONENT COMBINATIONS		
D647	MA165	DIODE	Z603	EXBF5E103J	COMBINATION PART
D648	MA165	DIODE	Z604	EXBF8E103J	COMBINATION PART
D649	MA165	DIODE	Z801	EXCEMT103DC	COMBINATION COM
D701	△ SVDS3V40	DIODE	Z802	EXCEMT103DC	COMBINATION COM
D702	△ SVDS3V40	DIODE	Z803	EXCEMT103DC	COMBINATION COM
D703	△ SVDS3V40	DIODE	DISPLAYS		
D704	△ SVDS3V40	DIODE	FL1	SADVF217	DISPLAY TUBE
D705	MA4140-M	DIODE	FUSES		
D706	MA4140-M	DIODE	F1	△ XBA2C20TB0	FUSE 250V, T2A
D707	MA29WA	DIODE	(E, E5, EG)		
D709	MA167	DIODE	F2	△ XBA2C20TB0	FUSE 250V, T2A
D710	MA167	DIODE	SWITCHES		
D711	MA165	DIODE	S201	SSS153	SW. CD INPUT SELECTOR
D714	MA4300M	DIODE	S501	SSH1073	SW. SPEAKER
D731	MA165	DIODE	S601	EVQQB005R	SW. PHONO
D801	MA165	DIODE	S602	EVQQB005R	SW. TUNER
D802	MA165	DIODE	S603	EVQQB005R	SW. CD
D803	MA165	DIODE	S604	EVQQB005R	SW. TAPE 1
D804	MA165	DIODE	S605	EVQQB005R	SW. TAPE 2
D805	MA700	DIODE	S606	EVQQB005R	SW. AUX
D806	MA165	DIODE	S607	EVQQB005R	SW. DAT
D807	MA4051-M	DIODE	S608	EVQQB005R	SW. MUTING
D808	MA4051-M	DIODE	S609	EVQQLY07K	SW. SURROUND
D809	MA4051-M	DIODE	S610	EVQQLY07K	SW. S.BASS
D810	MA29WA	DIODE	S700	△ SSH1071	SW. POWER
D811	MA165	DIODE	RELAYS		
D812	MA165	DIODE	RL501	SSY134	RELAY
D813	MA165	DIODE	OTHERS		
D820	LN038417P1	DIODE	X601	EF0FC4004A4	CERAMIC FILTER
D821	LN038417P1	DIODE	X801	SVQAT1923-S	CRYSTAL OSCILLATOR
D822	LN038417P1	DIODE	VARIABLE RESISTORS		
VR401	EWC2XAF20C15	V.R. BASS			
VR402	EWC2XAF20C15	V.R. TREBLE			

Ref. No.	Part No.	Description	Ref. No.	Part No.	Description
CABINET AND CHASSIS			49	SJJ141	M3 JACK
1	SJS9231A	AC INLET COVER	50	SJJ71E	JACK, HEADPHONE
2	SGP7170-12E	REAR PANEL	51	SJS306	SOCKET(3P), TUNER
(E)			52	SJS804	SOCKET(8P), DECK
2	SGP7170-12F	REAR PANEL	53	SMX897	COVER(CAPACITOR)
(EG)			54	△ SJS9231-1B	AC INLET
2	SGP7170-12J	REAR PANEL	56	△ SJT388	FUSE HOLDER
(E5)			58	SMN2056-1	BRACKET
2	SGP7170-13C	REAR PANEL	59	SMN2056	BRACKET
(EB)			60	SMN2043	ANGLE
3	SKL307	FOOT	61	SJF3062-13N	TERMINAL BOARD
4	SKU11650-3	BOTTOM BOARD	62	SMC6453	SHIELD PLATE
5	SBC666-1	BUTTON, POWER	63	SMC6441	SHIELD PLATE
6	SBC983B	BUTTON, SELECTOR	64	SHE233	FAN CASE
7	SBC1023	BUTTON, MUTING	65	SHE234	CAP
8	SBC1024-1A	BUTTON, DIGITAL	66	SHE232	FAN
9	SBC1025	BUTTON, BASS	67	MDN-4RB4MXA	MOTOR
10	SBC928	BUTTON, SPEAKER	68	SUS271	SPRING
11	SBN1224	KNOB, VOLUME	69	SGXUX950-KE2	FRONT GRILLE
12	RGW0016	KNOB, TONE	70	SJS50680WL	SOCKET(6P), J603, J604
13	SDL97	SMOKE PLATE	70	SJS51080WL	SOCKET(10P), J601, J602
14	SDL98	SMOKE PLATE	71	SJS50778JQ	SOCKET(7P), J503
15	SDL99	SMOKE PLATE	71	SJS51078JQ	CONNECTOR(10P), J504
16	SDL100	SMOKE SLATE	72	SJT30543-V	CONNECTOR(5P), J700
18	SUS227	SPRING	72	SJT30740LX-V	CONNECTOR(7P), J501
19	SGXUX950-KE1	FRONT GRILLE	74	SJF3062-22N	TERMINAL BOARD
20	SGX9036	ORNAMENT	75	SJT30439MB	CONNECTOR(4P), J201B
21	SHE187-2	HOLDER	75	SJT30839MB	CONNECTOR(8P), J204B
23	SJP9205-2Y	SHORTING PIN	75	SJT30939MB	CONNECTOR(9P), J202B
24	SMC1274	BRACKET	75	SJT31239MB	CONNECTOR(12P), J206B
25	SMN2078-2	BRACKET	76	SJT30647WL	CONNECTOR(6P), J603B, J604B
26	XWE3E13	WASHER	76	SJT31047WL	CONNECTOR(10P), J601B, J602B
27	SNE2123	SCREW	77	SJT3213	CONNECTOR(2P), J207B
28	SNE4021-1	NUT	77	SJT3613	CONNECTOR(6P), J801D
29	SUS832	SPRING	77	SJT3709	CONNECTOR(7P), J200B
30	RYP0069	FRONT PANEL	78	SJT30745JQ	CONNECTOR(7P), J503B
32	XTBS3+8JFZ1	SCREW	78	SJT31045JQ	CONNECTOR(10P), J504B
33	XTB3+20J	SCREW	81	△ SJS9225	AC OUTLET
34	XTB3+6FFZ	SCREW	(E, E5, EG)		
35	XTB3+8G	SCREW	81	△ SJS9322B	AC OUTLET
36	XTB3+8J	SCREW	(EB)		
37	XTB3+16J	SCREW	82	SJS9322A	AC OUTLET COVER
38	XTW3+8T	SCREW	(EB)		
39	XTWS3+8T	SCREW	83	SGX7977-1A	ORNAMENT
42	SKC2071K163	CABINET	84	SGX7967	ORNAMENT
44	SNE2129-1	SCREW	85	RSC0033	COVER
47	SJF4818-1	TERMINAL BOARD, SP. A	86	RSC0034	COVER
48	SJF4442-1	TERMINAL BOARD, SP. B	87	SMC1297	SHIELD COVER
			88	SHR9094	LATCH

Ref. No.	Part No.	Description	Ref. No.	Part No.	Description
PACKING MATERIAL			A1	RQF0071	INSTRUCTION MANUAL
P1	RUB50RK05W	PROTECTION BAG	(E, E5)		
P2	RP00101	PACKING CASE	A1	RQF0072	INSTRUCTION MANUAL
P3	SPS5182	PAD	(EB)		
P4	SPS5183	PAD	A1	RQF0074	INSTRUCTION MANUAL
P5	SPS5184	PAD	(EG)		
P6	XZB10X30A02	PROTECTION COVER	A2	△ SFDAC05E03	POWER CORD
ACCESSORIES			(E, E5, EG)		
			A2	△ SJA188	POWER CORD
			(EB)		